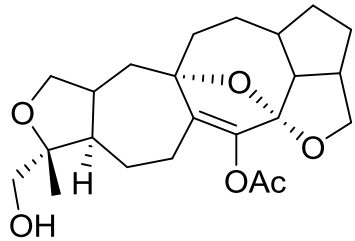
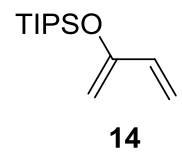


Retro-synthetic Route

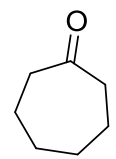
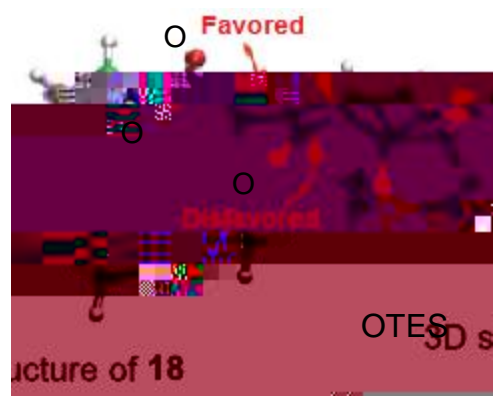
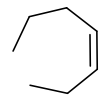
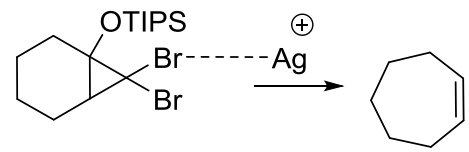
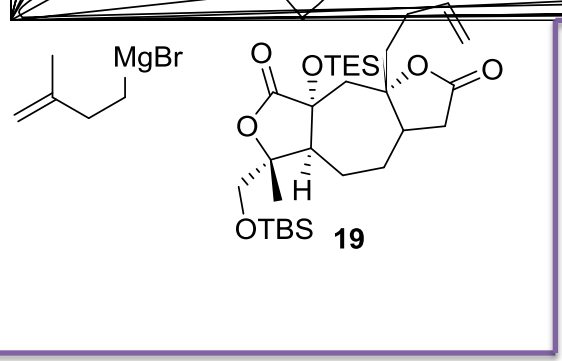
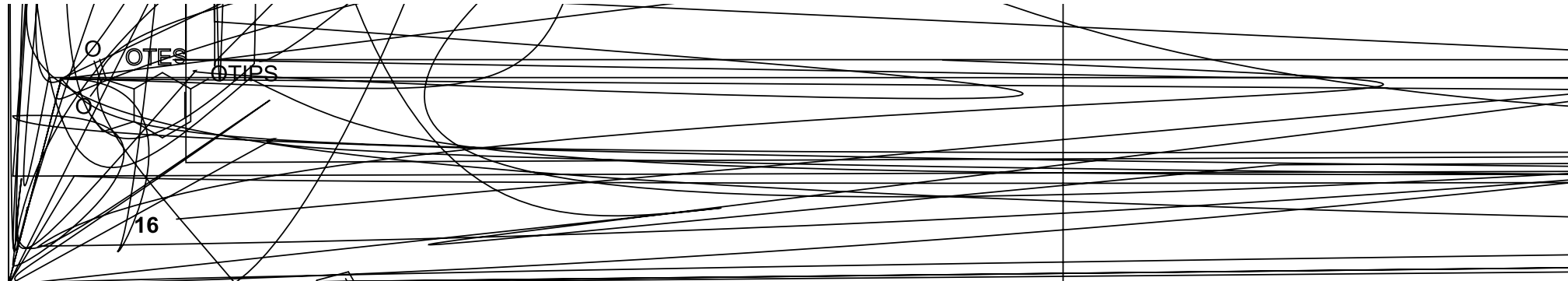


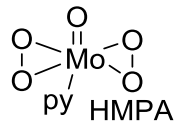
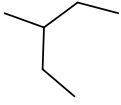
A very similar product, see: Yang, Z. *Nat. Commun.* 2017, 8, 14233.

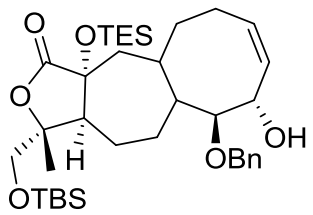


N

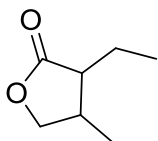
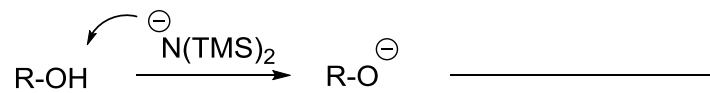


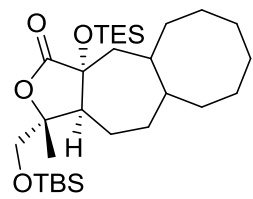




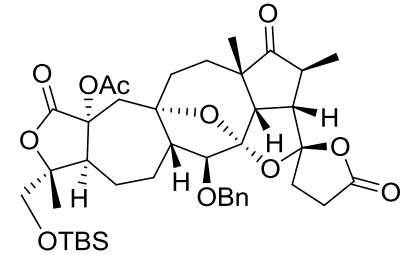


21

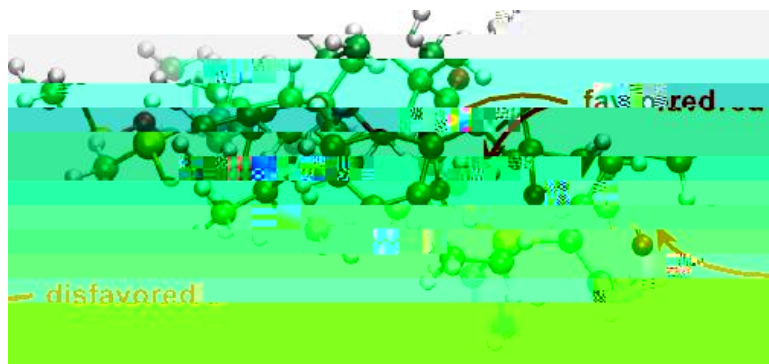




22



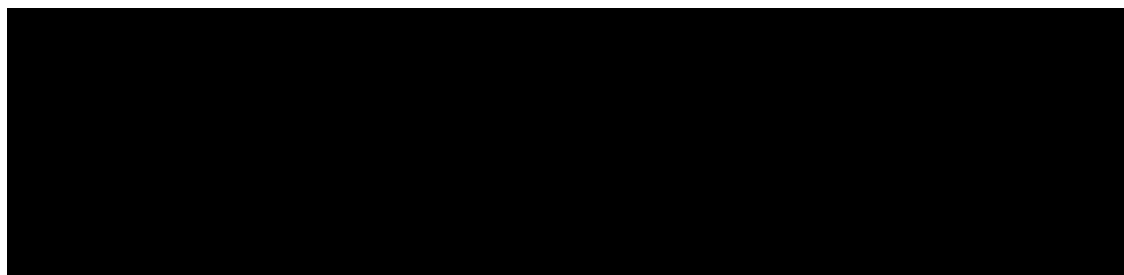
24
56%



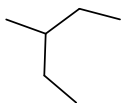
CO₂



O







1) $\text{Ac}_2\text{O}, \text{Et}_3\text{N}$
DMAP
2)

$\text{Pd/C}, \text{H}_2$

|

